

Immunology

Basic Terminologies

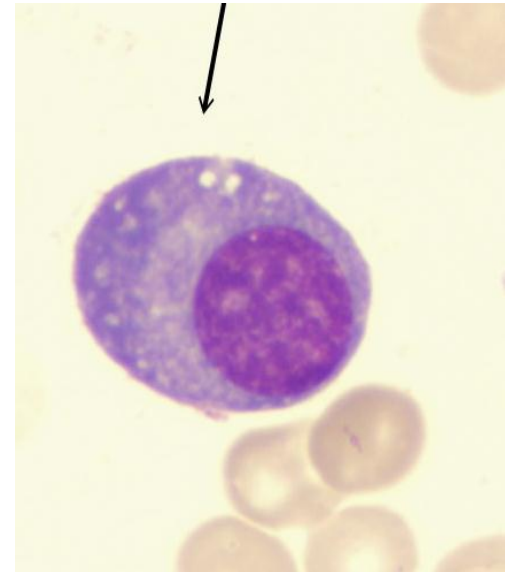
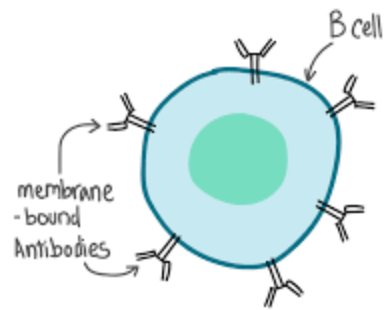


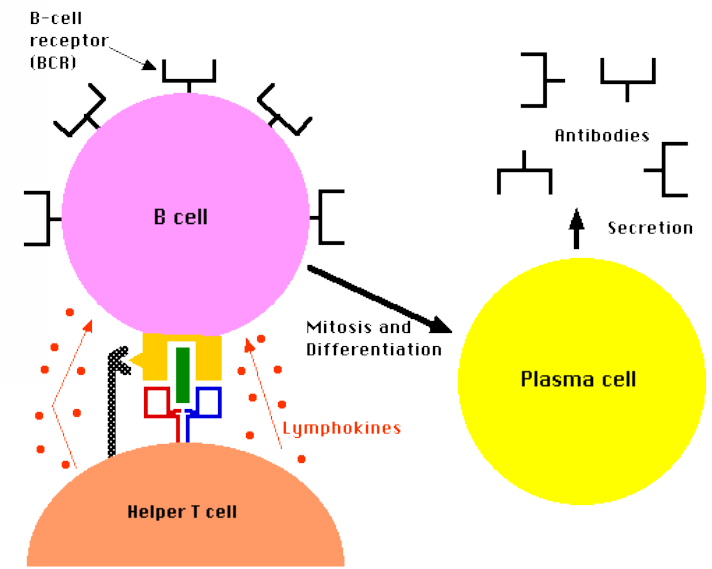
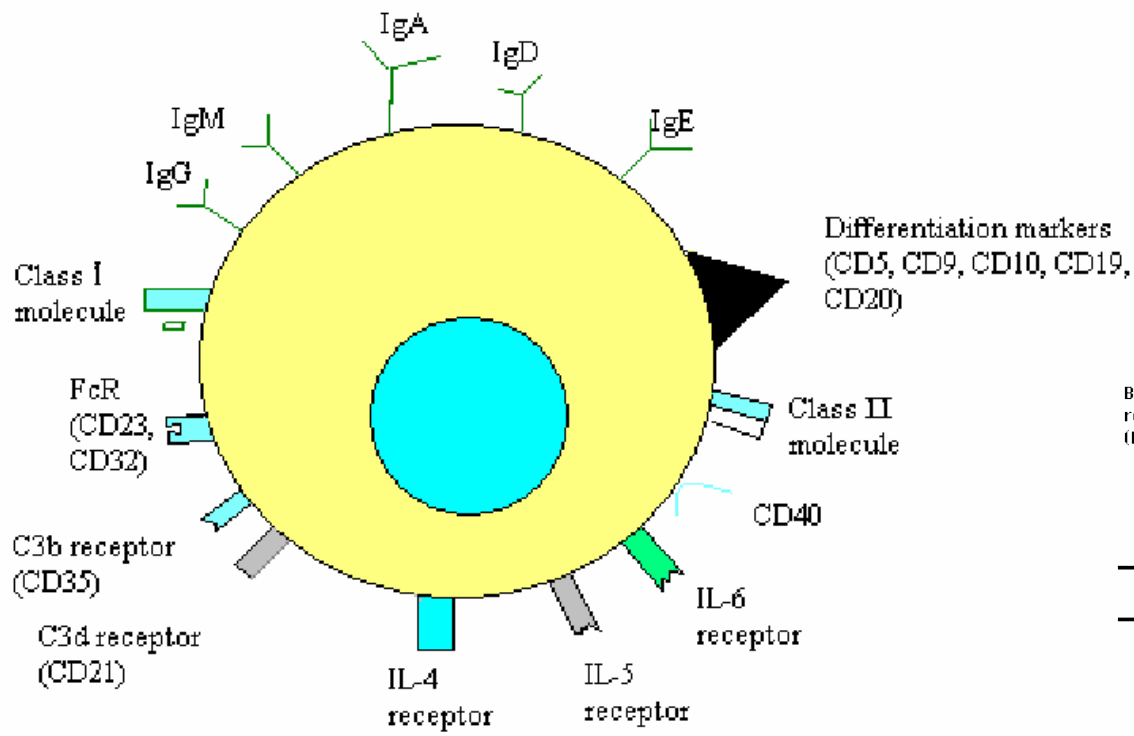
Dr. Abhishek Vashishtha
Department of Microbiology,
Maharaja Ganga Singh University, Bikaner.
e.mail: abhiv24@gmail.com,

(1) IMMUNITY:- Sum total of all the naturally occurring defence mechanisms that protect the host from infections.

(2) Lymphocytes:- Special group of white blood cells produced in bone marrow hemopoietic stem cells that are involved in immune responses.

- They are small, non phagocytic, mononuclear leukocytes.
- Immunologically competent or precursors of such cells.
- Lack stainable cytoplasmic granules.
- Produced at very high rates (10^9 cells/day)





③ Antigen :- A foreign (non-self) substance (such as proteins, glycoproteins, nucleoproteins, phospholipids etc.) to which lymphocyte responds.

OR. A molecule capable of interacting with specific component of immune system

It may be an immunogen

- They react with either Abs or antigen specific TCRs.
- Includes all proteins & lipopolysaccharides, many polysaccharides, some N.A & trichine ova.
- To act as antigen a substance (molecule) must have fairly high mol. wt. (greater than 10,000)

(4) Immunogen :- Substance that when administered under appropriate conditions in a host induce immune responses. They may include Ab production, activation of ϕ T cells or both. They ~~may be~~ ^{are always} antigenic.

- In most cases Immunogens are synonymous of Ag. However all Ags are not Immunogens

eg. Heptanes, low mol. wt. substances that can bind with Ab present already, but can not induce Ab production.

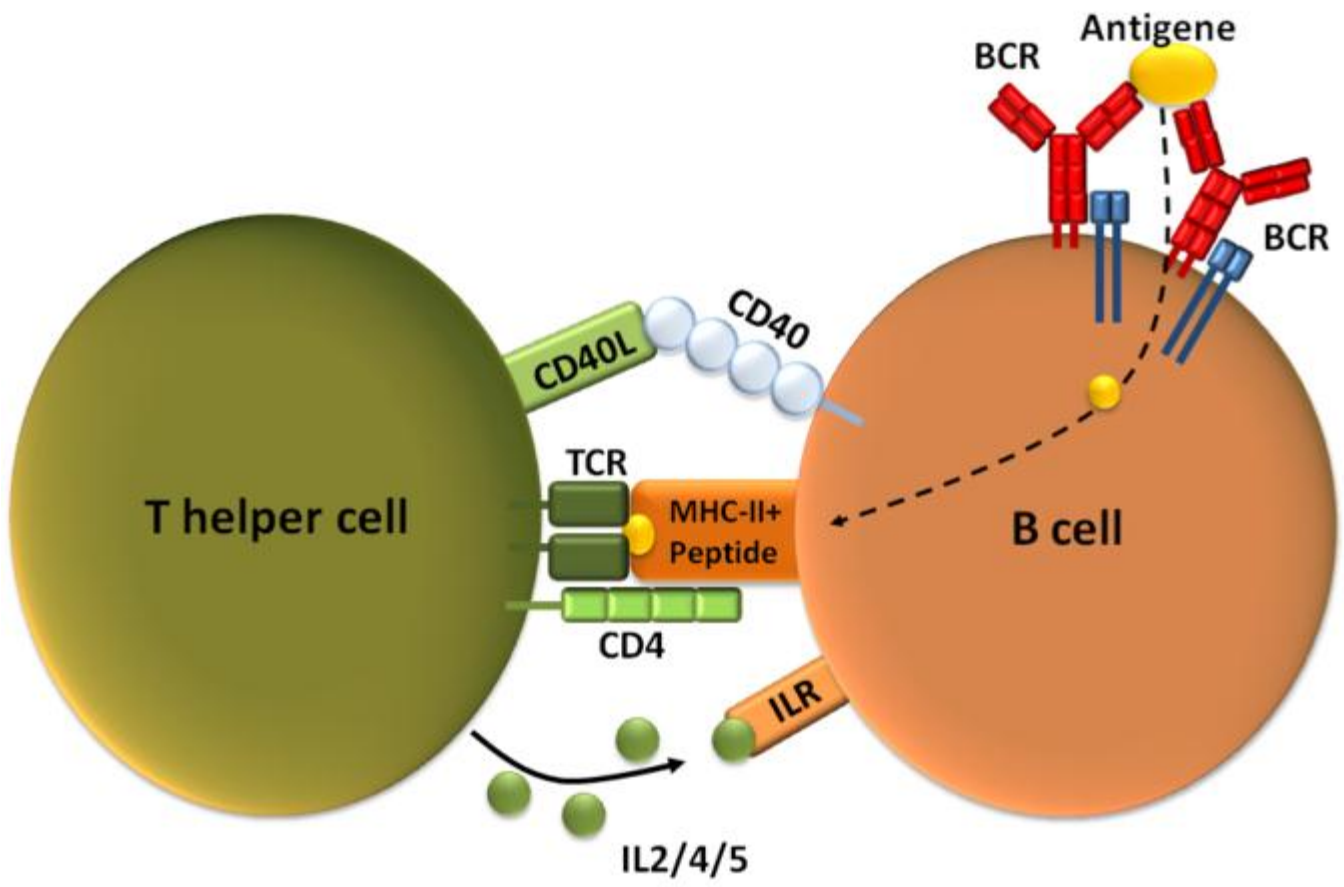
These are usually sugars, a.a. or other low mol. wt. organic substances.

Notes

Q2 Haptens :- Low mol. wt. organic substances that are not

02 JANUARY antigenic by themselves but when
THURSDAY coupled with macromolecular
carrier can elicit Abs against itself.

S	M	T	W	T	F	S
			1	2	3	4
5	6	7	8	9	10	11
12	13	14	15	16	17	18
19	20	21	22	23	24	25
26	27	28	29	30	31	



⑥ Antibody :- A glycoprotein produced by B-lymphocyte cells in response to the interaction of ^{with} an Ag. It has ability to combine with Ag that triggers its production.

- Also called as immunoglobulins (Igs)

- Soluble proteins.

- Divided into 5 basic types on the basis of their physical & immunological properties.

IgM, IgD, IgG, IgE & IgA.

- IgG → Most abundant.

(7) Plasma: The cell free, fluid portion of blood which contains all the clotting factors.

(8) Serum:- Liquid portion of blood which is free of blood cells & clotting factors.

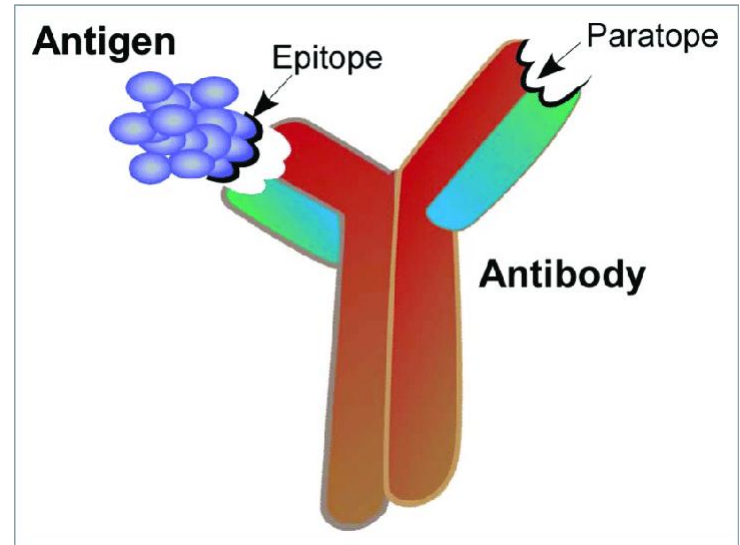
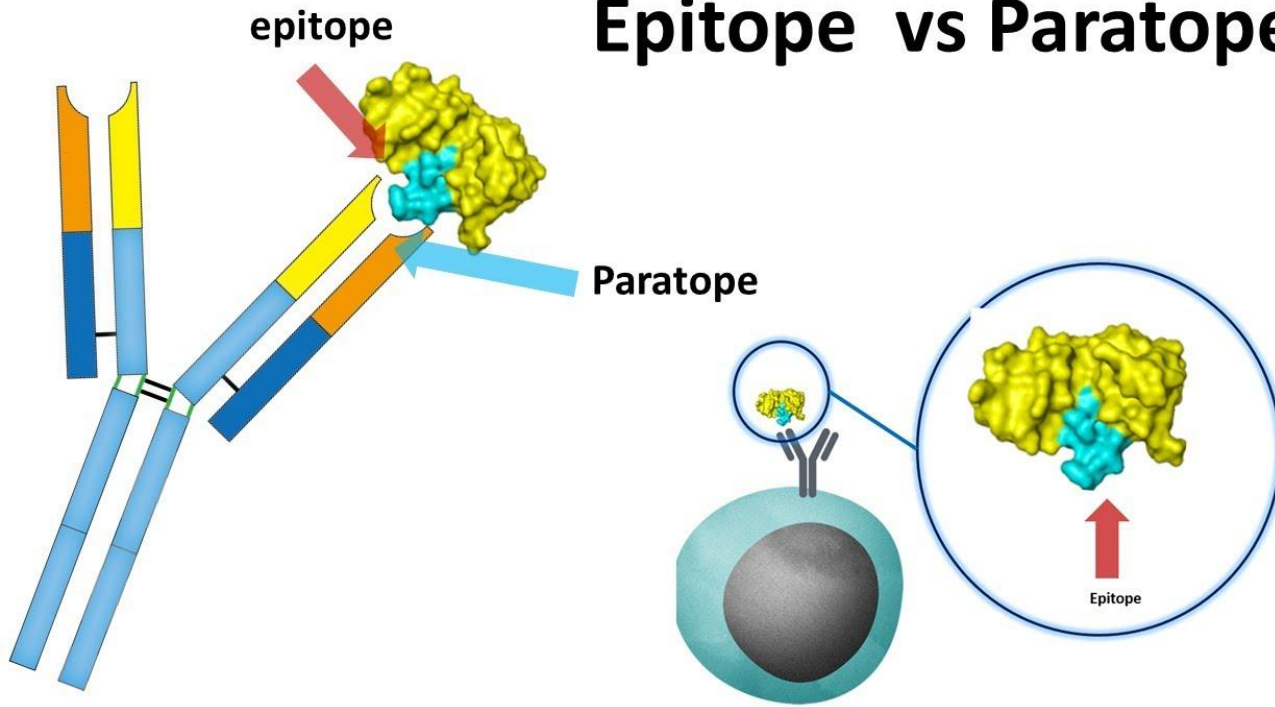
(9) Active Immunity:- An immune system achieved by self production of Abs.

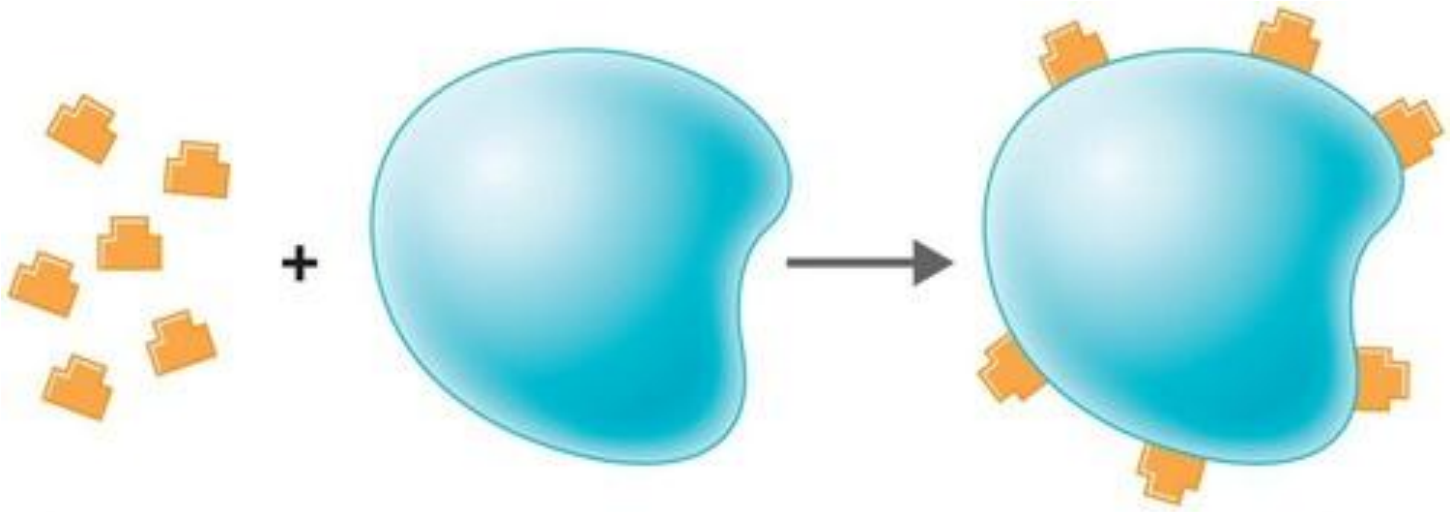
(10) Passive Immunity:- Immunity resulting from transfer of Abs or immune cells from an immune to non immune individual.

↓
Involves transfer of Abs to non immune individuals.

(11) Epitopes:- Portion of ^{antigen} immunoglobulin that interacts with an immunoglobulin or TCR.
It is a sequence of 4-6 a.a.

Epitope vs Paratope



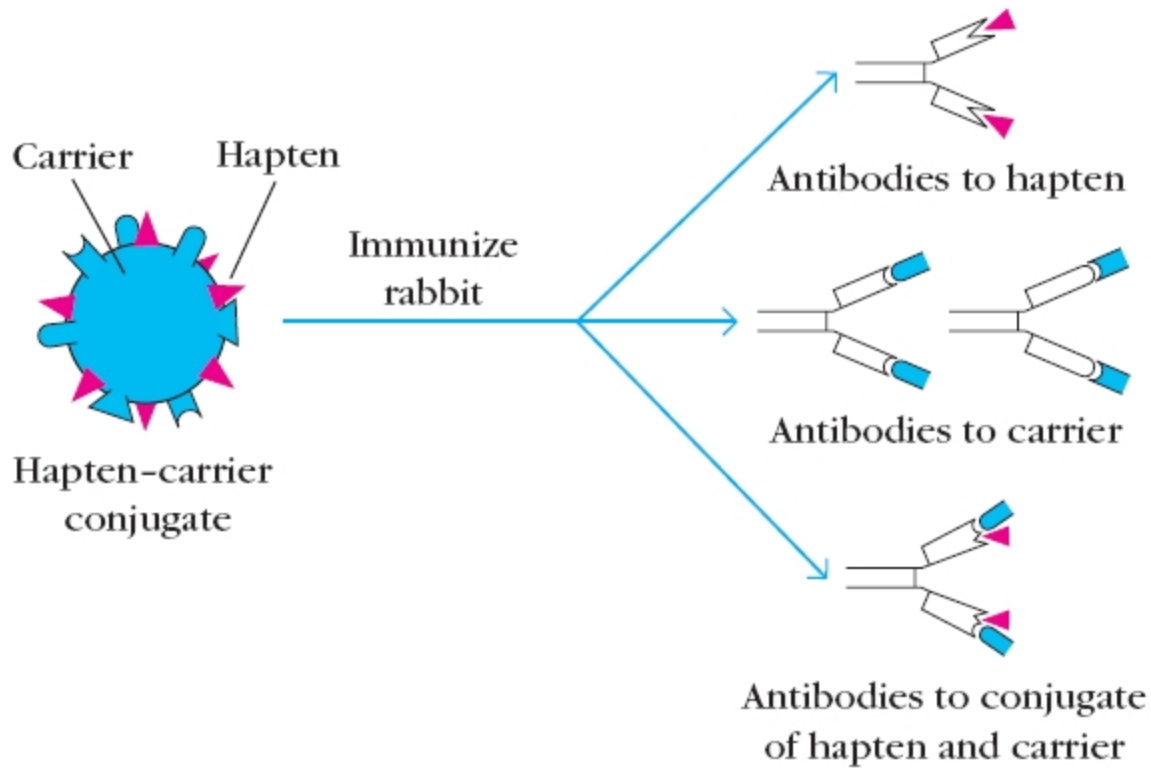


Hapten molecules

Carrier molecule

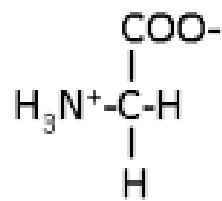
Hapten-carrier conjugate

Copyright © 2012 Pearson Education, Inc.

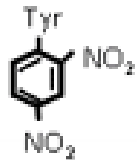


Injection with:	Antibodies formed:
Hapten (DNP)	None
Protein carrier (BSA)	Anti-BSA
Hapten-carrier conjugate (DNP-BSA)	Anti-DNP (major) Anti-BSA (minor) Anti-DNP/BSA (minor)

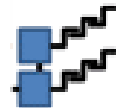
Immunogenicity



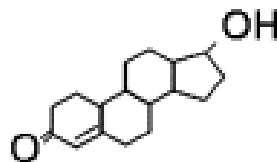
Amino acids



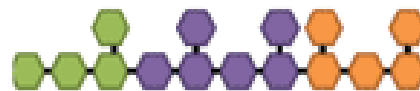
Haptens



Lipids



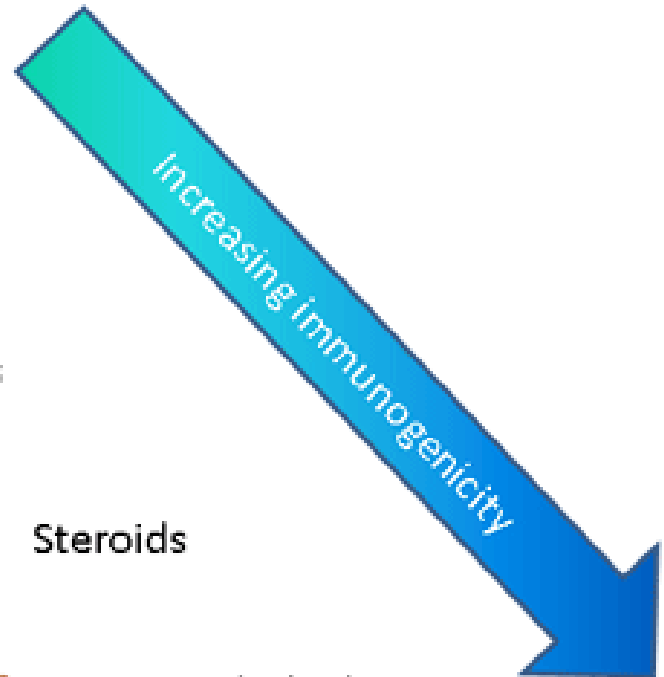
Steroids



Carbohydrates



Proteins



Acquired Immunity

Immunity you develop during your life

Active Immunity

Immunity you develop after being exposed to an infection or from getting a vaccine

Natural

Antibodies made after exposure to an infection

Artificial

Antibodies made after getting a vaccination

Passive Immunity

Immunity you acquire from someone or something else

Natural

Antibodies transmitted from mother to baby (e.g., via mother's milk)

Artificial

Antibodies acquired from an immune serum medicine

